

**SWAN LAKE FIRST NATION – MATRIX SOLUTIONS
INC. PARTNERSHIP**

INDIGENOUS CONSTRUCTION MONITORING

WEEKLY REPORT

SPREAD 7

OCTOBER 29TH TO NOVEMBER 3RD

1. PURPOSE OF THIS REPORT

The report is a weekly summary of the daily reports submitted by the Indigenous Construction Monitors that are working on spread seven. The social and cultural findings have been tabulated with locations and mitigation measures below. A summary of the construction activities has been summarized for the weeks of October 29th to November 3rd, 2018.

Social and Cultural Features

Field Observation	# of occurrences	Description and Mitigation Measures	Mitigation Status	Further Action Required (Yes/No)
Traditional Use Area (hunting, fishing, gathering, trapping)	3	SSKP 842+500 Archeologists with Golder are assessing heritage site HER-156.	Archeologists with Golder are assessing heritage site HER-156.	
Traditional Use Area (hunting, fishing, gathering, trapping)		Heritage traditional land ID # HER 160 Native prairie KP-863+270.		
Traditional Use Area (hunting, fishing, gathering, trapping)		Traditional Land Use area 1 Heritage Resource area HER-159 SSKP 858+010	Buffer mulch crew in area.	
Rock Formations (rocks of significance, tipi rings, etc.)	N/A			
Artifacts	N/A			
Bones	N/A			
Potential Gravesites	N/A			

Environmental Features

Field Observation	# of occurrences	Description and Mitigation Measures	Mitigation Status	Further Action Required (Yes/No)
-------------------	------------------	-------------------------------------	-------------------	----------------------------------

Medicinal or Cultural Plants	1	Rare plants crystal wort (riccia fluitans) ID # VG-85 SSKP 885.95 wetlands complex.		
Aquatic Life	N/A			
Animal Observations or Burrows	N/A			
Bird Nests	N/A			
Trees (Red Willow)	N/A			
Wetlands		KP-841+300 Wetlands complex semi permanent marsh. MB-054.		
Wetlands		<p>MB-1049 Seasonal Marsh Class 3 SSKP 836+800 Trenching, Lower In and Backfill crews working in area. -MB-048</p> <p>Ephemeral/Temporary Marsh Class 1 & 2 SSKP 837+000 Trenching, Lower In and Backfill crews working in area. -MB-049 Seasonal Marsh Class 3 SSKP 837+470 Trenching, Lower In and Backfill crews working in area. -MB-053</p>		

		Ephemeral/Temporary Marsh Class 1 & 2 SSKP 840+000 Access crew preparing wetlands for ramp. -MB-054 Semi-Permanent Marsh Class 4 Wetland Complex SSKP 841+460 Access crew preparing wetlands for ramp.		
Wetlands		Semi permanent marsh wetlands complex. MB-054 SSKP 841+000		
Wetlands		Class 4 MB-1039-5 Sensitive area SSKP 818+400		
Wetlands		1 MB-128 Seasonal Marsh Class 3 Wetland Complex SSKP 899+590	Pipe Gang working in area.	
Wetlands		MB-1039 Semi-Permanent Marsh Class 4 Wetland Complex SSKP 821+150	Tie In coating and Clean Up crews working in area.	
Wetlands		MB-055 Seasonal Marsh Class 3 SSKP 842+000		
Wetlands		MB-042 Ephemeral/Temporary	Buffer Crumb crew in area.	

		Marsh Class 1 & 2 SSKP 831+480 MB-055 Seasonal Marsh Class 3 SSKP 841+480 The trenching crew is digging through sensitive area.		
Wetlands		MB-056 Ephemeral/Temporary Marsh Class 1 & 2 SSKP 841+600	The trenching crew is digging through sensitive area.	
Wetlands		MB-057 Ephemeral/Temporary Marsh Class 1 & 2 SSKP 841+750 MB-058 Ephemeral/Temporary Marsh Class 1 & 2 SSKP 842+140 The trenching crew is digging through sensitive area.	The trenching crew is digging through sensitive area.	
Wetlands		MB-099 Semi-Permanent Marsh Class 4 SSKP 876+670	Coating Mainline working through wetlands.	
Wetlands		MB-100 Seasonal Marsh Class 3 SSKP 877+670	Coating Mainline working through wetlands.	

Wetlands		MB-054 Semi permanent marsh complex class 4 wetlands. KP-841+300.		
Wetlands		MB-1039 Semi-Permanent Marsh Class 4 Wetland Complex SSKP 818+800	Clean up crew removing wetland ramps.	
Wetlands		MB-107. Seasonal marsh class 3 KP-885.9 + 885.		
Wetlands		MB-106. Class 3 Seasonal marsh KP-885.65 + 885.7		
Wetlands		MB-084 Seasonal Marsh Class 3 Wetland Complex SSKP 857+130	Buffer Mulch crew in area.	
Wetlands		MB-085 Broad-Leaf Treed Swamp Wetland Complex SSKP 857+770	Buffer Mulch crew in area.	
Watercourse Crossing	1	Black Creek MB-WC27		

Additional Observations and Summary of Activities or Concerns

October 29, 2018 - Safety included: Slips, trips, falls, pay attention to the terrain you are walking on. Be alert for wildlife when driving. Congested sites. Be aware of moving equipment and always maintain eye contact with operator. While driving, pay attention to road conditions and signs. Maintain cleanliness of vehicles and ensure headlights, brake lights, windshield are clean, take garbage out after each shift. Proper P.P.E. to be worn on the job site. All injuries, incidents, and occupational illnesses can be prevented. All operating exposures can be controlled. As a Senior Monitor I'm accountable for safety performance. All employees are responsible for safety. Safety is 24/7 and benefits family, friends, co-workers and community. Be aware of students and children in Brandon area and gravel roads as school is in season. Dress in layers cold weather season here and drink plenty of water as dehydration can happen when cold out. Muddy conditions and snow be aware of surroundings on foot and when driving. Also, high winds today be careful around crews for dust contamination/coating fumes/welders fumes and also when opening doors vehicles/office doors/bathroom doors.

Weather forecast/Environment: Cloudy. Rain beginning early in the morning and ending in the afternoon. Fog patches dissipating in the morning. Amount 5 mm. Wind becoming south 20 km/h gusting to 40 near noon. High 7.

Keep all areas of work clean and gravel roads travelled as well. Minimize the number of environmental non-compliances. Provides Environmental Due diligence. Increase and strengthen the communication links between Contractors and Enbridge Construction and Environmental staff regarding environmental considerations and mitigation.

Provide daily on the job awareness/education through assessment and communication of the environmental considerations and mitigation.

General:

During the morning meeting, discussed the possibility of rain in forecast for today and to be aware of changing road conditions on the ROW and gravel roads. SSKP 837+000 Trenching, Lower In and Backfill crews working through wetlands MB-1049 Seasonal Marsh Class 3 SSKP 836+800, MB-048 Ephemeral/Temporary Marsh Class 1 & 2 SSKP 837+000 and MB-049 Seasonal Marsh Class 3 SSKP 837+470. Also, they were slowed down by running water in trench and it started raining making it harder to jeep pipe before they lower it in. SSKP 827+700 Tie In Coating blasting and coating in deep trench. Trench box used was stable and in good condition. SSKP 840+200 Access crew stripping wetlands with Argo that's knocking down cattails (bulrushes). They will join the wetland ramp from Rd # 28 to # 27 in MB-053 Ephemeral/Temporary Marsh Class 1 & 2 SSKP 840+000 and MB-054 Semi-permanent Marsh Class 4 Wetland Complex SSKP 841+460. SSKP 810+100 Stringing crew laying pipe towards Bone Yard. When complete they will string pipe at Rd # 27/28 wetland ramp when that's complete as well. RD # 2 Workers getting ready to start spraying the top-soil with synthetic copolymer dispersion. It will create a crust over the soil that will help it from being blown away. The seconds will also be sprayed. RD # 28 Snow cat trampling down the cattails in the wetlands marsh west of SF # 28 KP-841+300. RD # 29 Hydro seeding truck being loaded with wood fibre mulch bags that is being used for a barrier. RD # 57 Prep crew

ahead of the welders near the entrance of SF # 57. KP-894+849. Workers putting the skids in place for the side boom to lay the pipe.

Work Forecast: Continue to monitor ROW in sensitive areas as well as priority ones too.

October 30, 2018 - Safety included: Slips, trips, falls, pay attention to the terrain you are walking on. Be alert for wildlife when driving. Congested sites. Be aware of moving equipment and always maintain eye contact with operator. While driving, pay attention to road conditions and signs. Maintain cleanliness of vehicles and ensure headlights, brake lights, windshield are clean, take garbage out after each shift. Proper P.P.E. to be worn on the job site. All injuries, incidents, and occupational illnesses can be prevented. All operating exposures can be controlled. As a Senior Monitor I'm accountable for safety performance. All employees are responsible for safety. Safety is 24/7 and benefits family, friends, co-workers and community. Be aware of students and children in Brandon area and gravel roads as school is in season. Dress in layers cold weather season here and drink plenty of water as dehydration can happen when cold out. Muddy conditions and snow be aware of surroundings on foot and when driving. Also, high winds today be careful around crews for dust contamination/coating fumes/welders fumes and also when opening doors vehicles/office doors/bathroom doors.

Weather forecast/Environment:

Clear early in the morning then a mix of sun and cloud with 30 percent chance of showers late in the afternoon. Fog patches dissipating in the morning. Wind west 20 km/h increasing to 40 gusting to 60 in the morning. High 6. UV index 1 or low. Keep all areas of work clean and gravel roads travelled as well. Minimize the number of environmental non-compliances. Provides Environmental Due diligence.

Increase and strengthen the communication links between Contractors and Enbridge Construction and Environmental staff regarding environmental considerations and mitigation. Provide daily on the job awareness/education through assessment and communication of the environmental considerations and mitigation.

General:

During our morning meeting we discussed high winds in the forecast for this morning up to 60 km/h. SSKP 861+000 HD Bore crew ream 38" bit under road. Side Booms have section ready to be pulled. SSKP 873+696 Work around Souris Station is going well. Stringing and Welding crews have gone through area previously. Today Coating Mainline will also be through area. SSKP 900+000 Pipe Gang welding by Black Creek MB-WC27 and wetland MB-128 Seasonal Marsh Class 3 Wetland Complex SSKP 899+590. SSKP 907+650 Souris River HDD section was bored on Sunday October 29th. The pipe is protruding out of ground and the welders are preparing it for test head to push any water out with pig. RD # 3 North semi-trucks hauling pipes to the work site.

RD # 3 South workers getting ready to start spraying the synthetic copolymer dispersion onto the topsoil and the seconds. SF # 28 West Reassess the wetlands. Quad in the wetlands. Snowcat parked, worker giving it a cleaning with the sand blasting to remove the cattail fuzz out of the radiator. RD # 13 Excavator removing soil and sand that fell back into the open ditch. Checked generators and lighting plants, all well contained with the trays. Walked the SF checking for cigarette butts, oil and gas spills, garbage. No concerns. RD # 16 Observing the excavator back filling the tie-ins at the entrance of SF # 16 west. **RD # Monitoring** the bevelling crew, shavings on the ground near the pipe,

clean-up crew picking up the shavings on the ground. Main gang behind the bevelling crew. Poor-boy crew behind the main gang crew. No concerns.

Work Forecast: Continue to monitor sensitive and priority areas on ROW.

October 31, 2018- Safety included: Muddy sites, slips, trips, falls. Watch out for pot holes, skids, garbage. Wear the proper footwear. Be aware of moving equipment and always maintain eye contact with operator. While driving, pay attention to road conditions and signs. Maintain cleanliness of vehicles and ensure headlights, brake lights, windshield are clean, take garbage out after each shift. Proper P.P.E. to be worn on the job site. All injuries, incidents, and occupational illnesses can be prevented. All operating exposures can be controlled. As a Senior Monitor I'm accountable for safety performance. All employees are responsible for safety. Safety is 24/7 and benefits family, friends, co-workers and community. Be aware of students and children in Brandon area and gravel roads as school is in season. Dress in layers cold weather season here and drink plenty of water as dehydration can happen when cold out. Muddy conditions and snow be aware of surroundings on foot and when driving. Also, high winds today be careful around crews for dust contamination/coating fumes/welders fumes and also when opening doors vehicles/office doors/bathroom doors.

Weather forecast/Environment:

Cloudy. Becoming a mix of sun and cloud in the morning. Wind northwest 20 km/h gusting to 40. High plus 3. UV index 1 or low.

Minimize the number of environmental non-compliances. Provides Environmental Due diligence. Increase and strengthen the communication links between Contractors and Enbridge Construction and Environmental staff regarding environmental considerations and mitigation. Provide daily on the job awareness/education through assessment and communication of the environmental considerations and mitigation.

General:

No power or internet in office in the morning and after shift. There will be a new generator for tomorrow. Will have to check our fire extinguishers as it's the beginning of the month. SSKP 841+100 Excavator unloading Side Boom arms to set-up Side Booms on Rd #28 west. Trenching, Lower In and Backfill crews are moving equipment to Rd # 28 as they had to mobilize around the incomplete wetlands area that goes from Rd # 27 to # 28. Once they start, they will be approaching archaeological site that the senior and junior monitors will monitor. SSKP 823+000 Tie In crew making a cut into pipe. Then they will tie it in and weld in trench. In the same area they welded the pipe and Rotoscan is inspecting the weld. Once complete the Tie In Coating crew will coat the weld. They also have a trench box in ditch because of unstable ground.

SSKP 821+150 At Rd # 14 Tie In crew welding in trench in wetlands MB-1039 Semi-Permanent Marsh Class 4 Wetland Complex. Excavators are digging around water conduit and MTS cables that cross our trench. SSKP 820+900 to 817+300 Clean Up crew removing wetland ramps and cleaning up any debris or deficiencies on ROW.

RD # 62 Worker sandblasting the pipe. Check the ROW for cigarette butts, oil gas spills. Side booms moving the welding shacks. Clean and tidy. No concerns. RD # 63 Grader grading the ROW. 8 dozers and 2 excavators are parked waiting to be moved to the next job site. Bending machine had a hydraulic ram burst. 2 bolts broke and 2 bolts

stripped. workers put the spill trays under the machine. Worker estimated 1 litre was spilled before they could catch the burst from the hose. RD# 38 Reassessing the ROW. Bags of pre-existing contaminated soil well contained. No concerns. RD # 37 Workers preheating the pipe than the repair crew comes behind to find any defects and then repairs it. RD # 63 Back to reassess the spill. no concerns. Workers bag the contaminated soil.

Work Forecast: Continue to monitor sensitive areas on ROW and assist archaeologists tomorrow.

November 1, 2018 - Safety included: Congested sites. Pay attention to road conditions and signs and stay alert. Be aware of moving equipment and always maintain eye contact with operator. Maintain cleanliness of vehicles and ensure headlights, brake lights, windshield are clean, take garbage out after each shift. Proper P.P.E. to be worn on the job site. All injuries, incidents, and occupational illnesses can be prevented. All operating exposures can be controlled. As a Senior Monitor I'm accountable for safety performance. All employees are responsible for safety. Safety is 24/7 and benefits family, friends, co-workers and community. Be aware of students and children in Brandon area and gravel roads as school is in season. Dress in layers cold weather season here and drink plenty of water as dehydration can happen when cold out. Muddy conditions and snow be aware of surroundings on foot and when driving. Also, high winds today be careful around crews for dust contamination/coating fumes/welders fumes and also when opening doors vehicles/office doors/bathroom doors.

Weather forecast/Environment: Cloudy. Snow beginning early in the morning then changing to rain late in the morning. Risk of freezing rain in the morning. High plus 3.

Minimize the number of environmental non-compliances. Provides Environmental Due diligence. Increase and strengthen the communication links between Contractors and Enbridge Construction and Environmental staff regarding environmental considerations and mitigation. Provide daily on the job awareness/education through assessment and communication of the environmental considerations and mitigation.

General:

Discussed the possibility of freezing rain and to drive with caution at the morning meeting. SSKP 842+500 Archaeologists with Golder are assessing heritage site HER-156. The crew laid out extra geo tech for trenching crew to help better contain overspill. The trenching crew is digging through sensitive area as well as working in wetlands. MB-055 Seasonal Marsh Class 3 SSKP 841+480, MB-056 Ephemeral/Temporary Marsh Class 1 & 2 SSKP 841+600, MB-057 Ephemeral/Temporary Marsh Class 1 & 2 SSKP 841+750 and MB-058 Ephemeral/Temporary Marsh Class 1 & 2 SSKP 842+140 SSKP 877+058 Coating Mainline working through wetlands MB-099 Semi-Permanent Marsh Class 4 SSKP 876+670 and MB-100 Seasonal Marsh Class 3 SSKP 877+670. SSKP 860+756 Excavator digging off of road. The bore was pulling underground and was stopped by an obstruction. They couldn't pull anymore so excavator had to dig to remove obstruction to finish road bore pull.

SSKP 831+300 Buffer Crumb crew had excavators removing overspill on buffer left by trenching crew. They also worked through wetland MB-042 Ephemeral/Temporary Marsh Class 1 & 2 SSKP 831+480. RD # 13 Excavators digging out the road between RD # 13 across to RD # 14, so they can string the pipe across the road. Checked for

cigarette butts, gas or oil leaks. No concerns. RD # 16 Observing the excavator back filling the tie-ins. Checked generators and lighting plants for gas or oil leaks. Clean and tidy. RD # 28 Side booms starting to lower in the pipes. 2-excavators removing soil that fell back into the trench. KP-842+030 Wetlands class 3- ID # SKP-842. Seasonal marsh.

Work Forecast: Monitor sensitive areas and work with archaeologists.

November 2, 2018 - Safety included: Communication let your supervisor know your where about and what you are doing at all times. Focused on job at hand. Equipment-always maintain good eye contact with the operator. Lifting and handling lift with your knees not your back. All injuries, incidents, and occupational illnesses can be prevented. All operating exposures can be controlled. As a Senior Monitor I'm accountable for safety performance. All employees are responsible for safety.

Safety is 24/7 and it benefits family, friends, co-workers and community.

Be aware of students and children in Brandon area and gravel roads as school is in season. Dress in layers cold weather season here and drink plenty of water as dehydration can happen when cold out. Muddy conditions and snow be aware of surroundings on foot and when driving. Also, high winds possible today be careful around crews for dust contamination/coating fumes/welders fumes and also when opening doors vehicles/office doors/bathroom doors.

Weather forecast/Environment: Cloudy. 60 percent chance snow or rain. High 3. UV index 1.

General:

Discussed snow and freezing rain for today's forecast. Drive safe giving enough time to stop on slippery roads. SSKP 842+800 Trenching, Lower In and Backfill crews shut down today from rain/snow conditions. SSKP 823+450 Tie In crew setting up pipe to be cut and then lined up and welded. SSKP 821+183 at Rd # 14 on road 147W the gravel truck was dumping sand on the road as they had no room on ROW for it. They had flaggers help direct traffic. SSKP 818+800 Clean-up crew clearing and cleaning up wetland ramp in wetlands MB-1039 Semi-Permanent Marsh Class 4 Wetland Complex.

SSKP 814+000 Clean-up crew spreading topsoil over ROW preparing for final clean up. RD # 63 Reassessing the worksite where the bending machine had the hydraulic ram burst. Contaminated Sand was shovelled into the bags and ground was cleaned. Properly contained and cleaned up. Semi trucks moving the equipment to different job sites. Truck driver tightening the chains on the truck to secure the load before moving the semi truck. SF very muddy, light snow. RD # 38 Bobcat mowing the grass and flattening it before they put the mulch down to act as barrier for the top-soil. Reassess the pre-existing contaminated soil. No concerns. RD # 28 Semi truck unloading skids. Snow cat parked mechanics working on it. Light snow cover on ground. RD # 1 Side booms stringing the pipe. Trench box placed in the open ditch. Checked the generators all were properly maintained with the spill trays underneath them. Very muddy and very congested.

Work Forecast: Continue to monitor sensitive areas and assess work with archaeologists.

November 3, 2018 - Safety included: Muddy sites, Slips, trips, falls. Wear the proper footwear. Watch out for pot holes, skids, garbage. Heavy equipment, keep eye contact with operator at all times. Wear proper P.P.E. Weather dress for the season not the day. Communication, let your co-workers know where you are going and when you will be back. All injuries, incidents, and occupational illnesses can be prevented. All operating exposures can be controlled. As a Senior Monitor I'm accountable for safety performance. All employees are responsible for safety. Safety is 24/7 and it benefits family, friends, co-workers and community. Be aware of students and children in Brandon area and gravel roads as school is in season. Dress in layers cold weather season here and drink plenty of water as dehydration can happen when cold out.

Muddy conditions and snow be aware of surroundings on foot and when driving.

Also, high winds possible today be careful around crews for dust contamination/coating fumes/welders fumes and also when opening doors vehicles/office doors/bathroom doors.

Weather forecast/Environment: 30 % chance of snow. Wind northwest 20 km/h. High 1. Minimize the number of environmental non-compliances. Provides Environmental Due diligence. Increase and strengthen the communication links between Contractors and Enbridge Construction and Environmental staff regarding environmental considerations and mitigation. Provide daily on the job awareness/education through assessment and communication of the environmental considerations and mitigation.

General:

In our morning meeting we discussed the roads and the winter ahead. The junior monitors are concerned with safety from the small SUV they were provided. Let management know issue. SSKP 842+560 Excavator installing swamp weights onto pipe in wetlands area. The weights are used to help keep the pipe from coming towards surface once pipe is buried. SSKP 842+850 Archaeologists assessing Heritage Resource site HER-156 as Trenching and Backfill work with the soil. Spoke with archaeologist lead hand and they have no findings at this time. Excavators and Dozers in area backfilling with Trenching crew digging. The area is wet from wetlands and they will lower in pipe once trench is cleared. SSKP 857+726 Buffer Mulch crew spraying buffer zone through wetlands MB-084 Seasonal Marsh Class 3 Wetland Complex SSKP 857+130, MB-085 Broad-Leaf Treed Swamp Wetland Complex SSKP 857+770 and Heritage Resource area HER-159 SSKP 858+010. SSKP 860+756 The road was dug out about 2 feet so they had to place concrete barricades from when the bore was stuck and they had to dig to release it. They will now hook up the "Big Rig" and pull the bore section for Rd # 36. RD # 51 Reassess the SF and walked the ROW. Very muddy. Snow cover on the ground. Walked to the rare plant site. All the rare plants are dried up due to the winter season setting in. Walked to the wetland site. No activity, ice forming in the marsh. KP- 885+885. No concerns.

Work Forecast: Continue to monitor the lines.

Photos of Sites Visited & Topics Discussed This Week

October 29, 2018



Description & Location KP-841+300

Photo taken facing west.
Snowcat trampling down the cattails in the wetlands marsh.



Description & Location KP-809+289

Photo taken facing north.
Workers spraying synthetic copolymer dispersion onto the top-soil.



Description & Location: SSKP 837+000

Ditcher
Ripping through sandy soil
Soil comes out from conveyor
Facing southeast



Description & Location: SSKP 827+700

The Legend painter/blaster
Worked with this man many moons
He's checking for jeeps and found one
Facing southeast



Description & Location: SSKP 810+100

Stringing crew
Laying pipe towards Bone Yard
Skids laid out for pipe
Facing south



Description & Location: SSKP 840+200

Argo
Knocking down cattails in the wetlands
They will extend wetland ramp from here

October 30, 2018



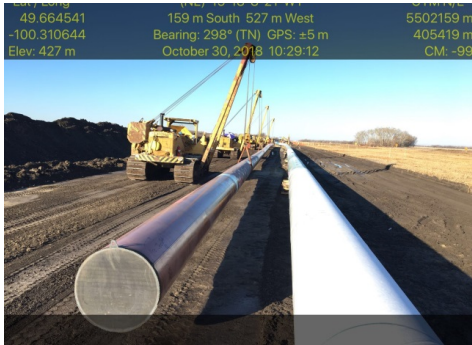
Description & Location 848+300

Photo taken facing west.
Worker checking the wetlands marsh.
MB-054 semi permanent marsh complex.



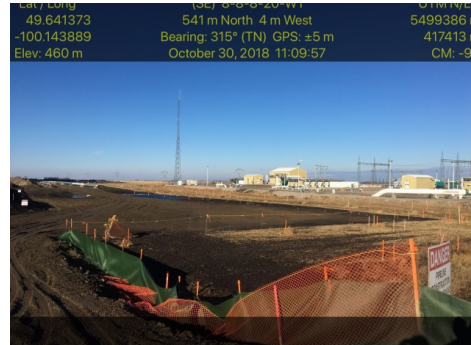
Description & Location KP-810+932

Photo taken facing north.
Premay trucking hauling the pipe to work site.



Description & Location: SSKP 861+000

HD Bore crew
Side Booms holding pipe
They will bore after they ream under road
Facing west



Description & Location: SSKP 873+696

Enbridge Souris Station
ROW next too station
This is site that will tie in to station
Facing northwest



Description & Location: SSKP 900+000

Pipe Gang welding
By Black Creek watercourse
Also wetlands in area
Facing east



Description & Location: SSKP 907+650

Souris River HDD bore
Welder preparing end of pipe
They bore was completed on October
29th

October 31, 2018



Description & Location KP 903+400

Photo taken facing east.
Side booms moving the welders shacks to RD # 62.



Description & Location: SSKP 841+100

Backfill Crew
Assisting Lower In crew with set-up
They will be working in Heritage area
Facing east



Description & Location: SSKP 823+000

Tie In and Rotoscan crews
Rotoscan to left inspecting pipe
Tie In crew getting ready to cut pipe
Facing east



Description & Location: SSKP 821+150

Tie In crew
Welders in background welding pip
Excavators digging around buried lines
Facing east



Description & Location: SSKP 817+300

Clean Up crew
Excavator Removing Caempla carpet
Removing wetland ramps and
deficiencies

November 1, 2018

Photo



Description & Location KP-823+400

Photo taken facing north.
Excavator digging out the road between RD # 13 and RD # 14 so they can string the pipe across the road.

Photo



Description & Location KP-823+417.5

Photo taken facing east.
Excavator digging out the open ditch.
Worker guiding the excavator operator on where to put the bucket to dig.



Description & Location: SSKP 831+300

Buffer Crumb crew
Cleaning up overspill on buffer
Excavators working through wetlands
Facing northeast



Description & Location: SSKP 842+500

Trenching crew digging trench
Lower In hooking onto pipe
Backfill behind Lower In
Facing west



Description & Location: SSKP 860+756

HD Bore crew
Excavator digging off of road
Digging out soil to free up bore pipe
Facing west



Description & Location: SSKP 877+058

Coating mainline
Blasting pipe on both sides
Coating applicators behind blasters
Facing west

November 2, 2018

Photo



Description & Location KP 841+300

Photo taken facing south.
Quad parked in the wetlands.
MB-054 Semi permanent marsh complex
class 4 wetlands.

Photo



Description & Location KP 904+400

3 Semi trucks getting ready to load up the
equipment and move to different work
site.



Description & Location: SSKP 823+450

Tie In crew
Setting up pipe for a cut
They will weld it after they line pipe together
Facing east



Description & Location: SSKP 821+183

Tie In crew
Using the sand to pad underground lines
Limited room so they had to on road
Facing north



Description & Location: SSKP 818+800

Clean Up crew
Removing wetland ramps
Excavator loading Rock Truck with sand
Facing northwest



Description & Location: SSKP 814+000

Clean up crew
Spreading topsoil on ROW
Preparing ROW for final clean up
Facing east

November 3, 2018



Description & Location KP- 885.9+885

Photo taken facing east.
Reassessing the wetlands.
MB-107 Seasonal marsh class 3 wetlands.



Description & Location KP- 885.65 +885.7

Photo taken facing east.
ID # 106 Seasonal marsh class 3.
Reassessing the wetlands crossing.



Description & Location: SSKP 842+560

Excavator and Swamper
Getting swamp weights ready
They will place them on pipe in trench
Facing west



Description & Location: SSKP 842+850

Trenching and Backfill Crews
Working through HER-156
Archeologists are present
Facing east



Description & Location: SSKP 857+726

Buffer Mulch crew
Spraying Buffer zone
Working through wetland area
Facing northeast



Description & Location: SSKP 860+756

HD bore crew
Had to dig by road from stuck bore pipe
Concrete barricades were placed
Facing north

APPROVALS



Lee Bear
Senior Construction Monitor

December 18, 2018

Date



Daniel Tober
Senior Environmental Scientist

December 18, 2018

Date